

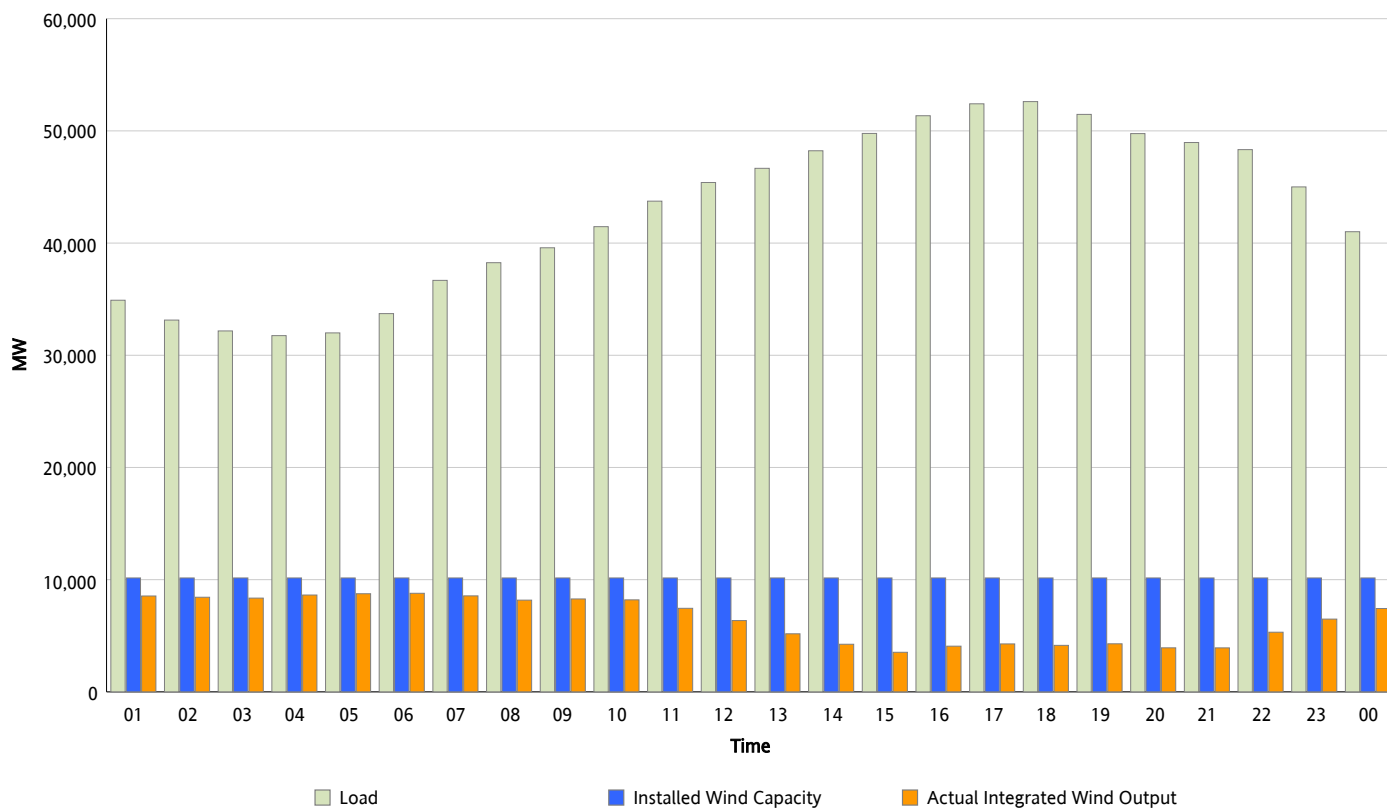


ERCOT Grid Operations

Wind Integration Report : 05/30/2013

Peak Load	52,611 MW
Load Peak Hour (HE)	18
Wind Over Peak	4,147 MW
Wind Record 05/02/13	9,674 MW
Max Wind Value*	8,859 MW
Wind Peak Time	05:42
Wind Integration %	25.84 %

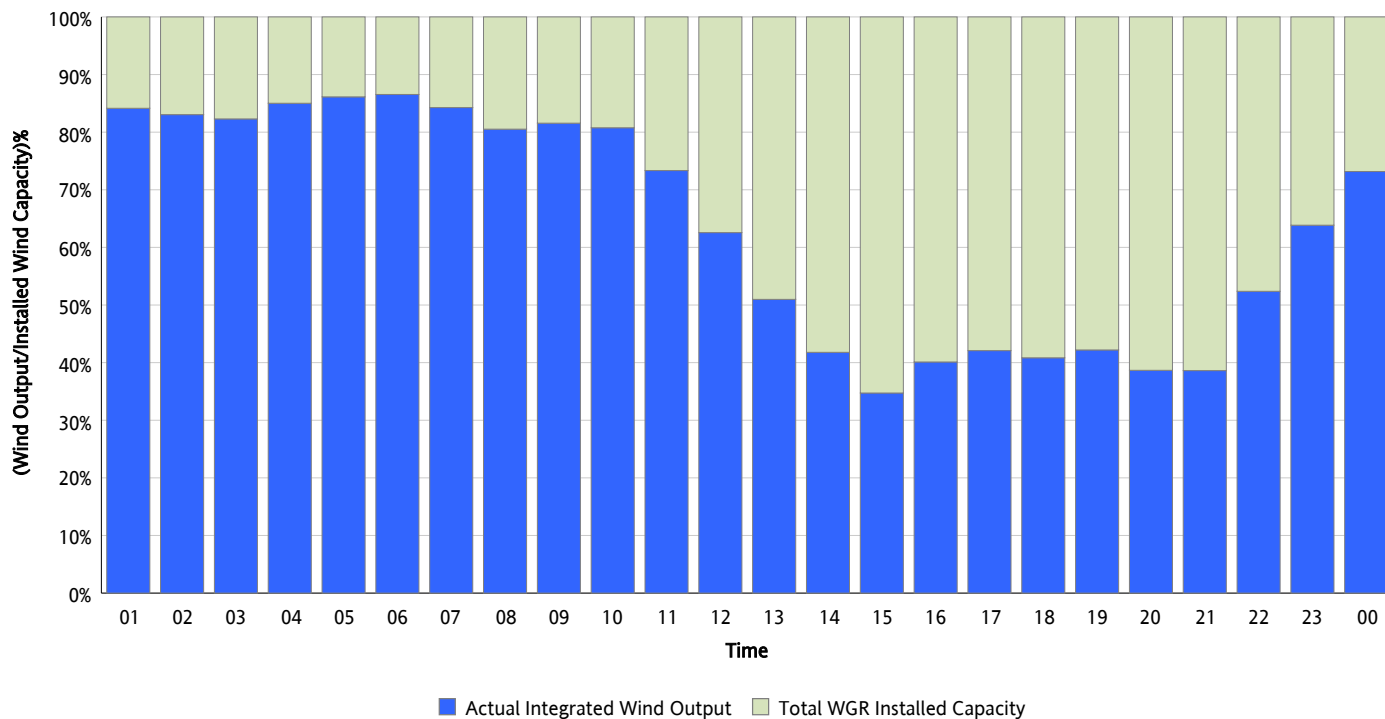
Hourly Average Actual Load vs. Actual Wind Output
05/30/2013



* Wind Record and Wind Max represent instantaneous values and the rest of the values are integrated over the hour

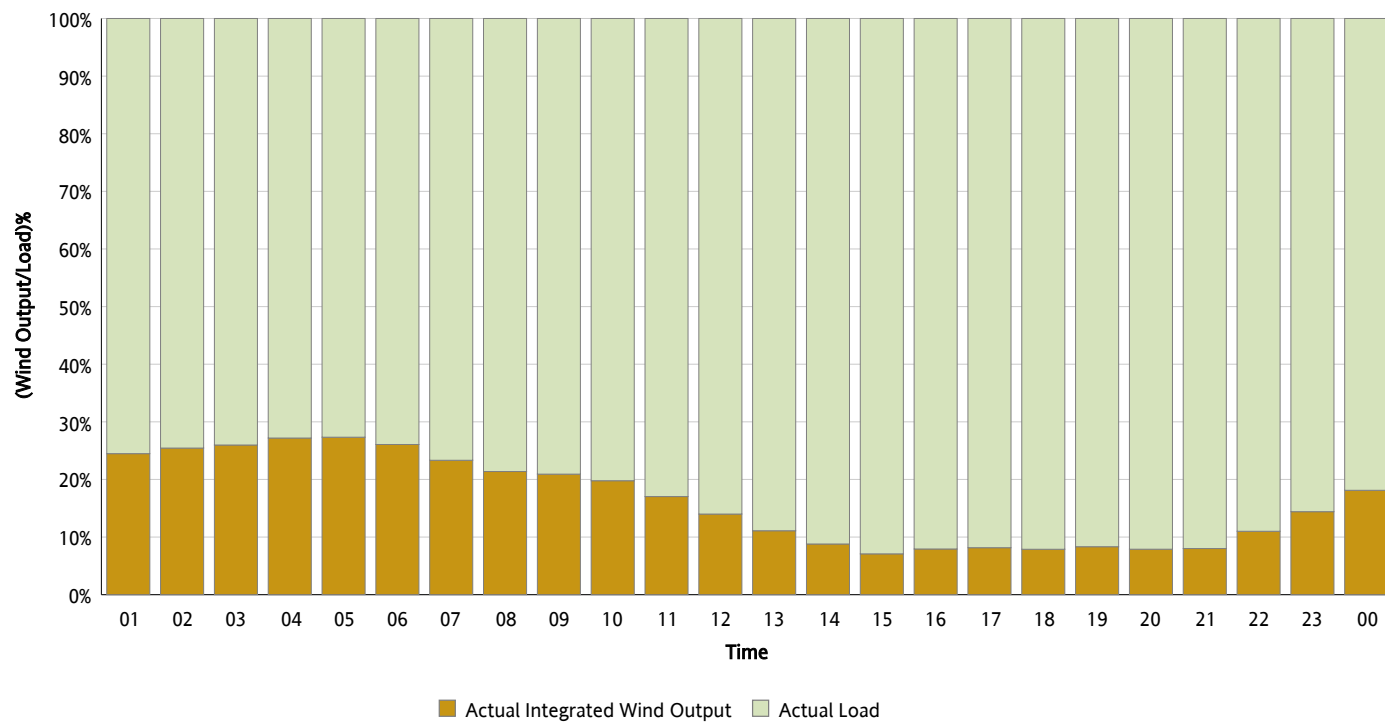
Actual Wind Output as a Percentage of the Total Installed Wind Capacity

05/30/2013



Actual Wind Output as a Percentage of the ERCOT Load

05/30/2013



ERCOT Load vs. Actual Wind Output

05/23/2013 - 05/30/2013

